

QUADRATURE

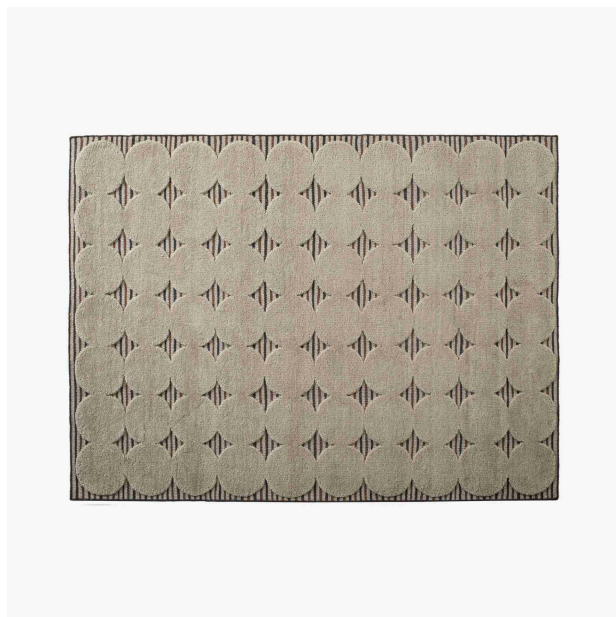
Designer

Marie C Dorner

Technical characteristics

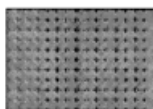
Like mossy islands in nature, 70 circles of virgin wool tuft float on a background of woven cotton lines. Very geometric, this classic-looking rug is a dark horse : walk from circle to circle, jump over the circles; a nod to the child we remain at heart.

Ligne Roset exclusivity. Hand-woven and hand-knotted 44% Sardinian wool 11% New Zealand wool 45% cotton. Ecrû-hazelnut colour. No equivalent sample shades. Please allow for a tolerance of +/- 3 % in terms of length and width.



PRODUCTS

RUG



Sizes

Width 67 "

Length 96 "

Weight 42.99 lb